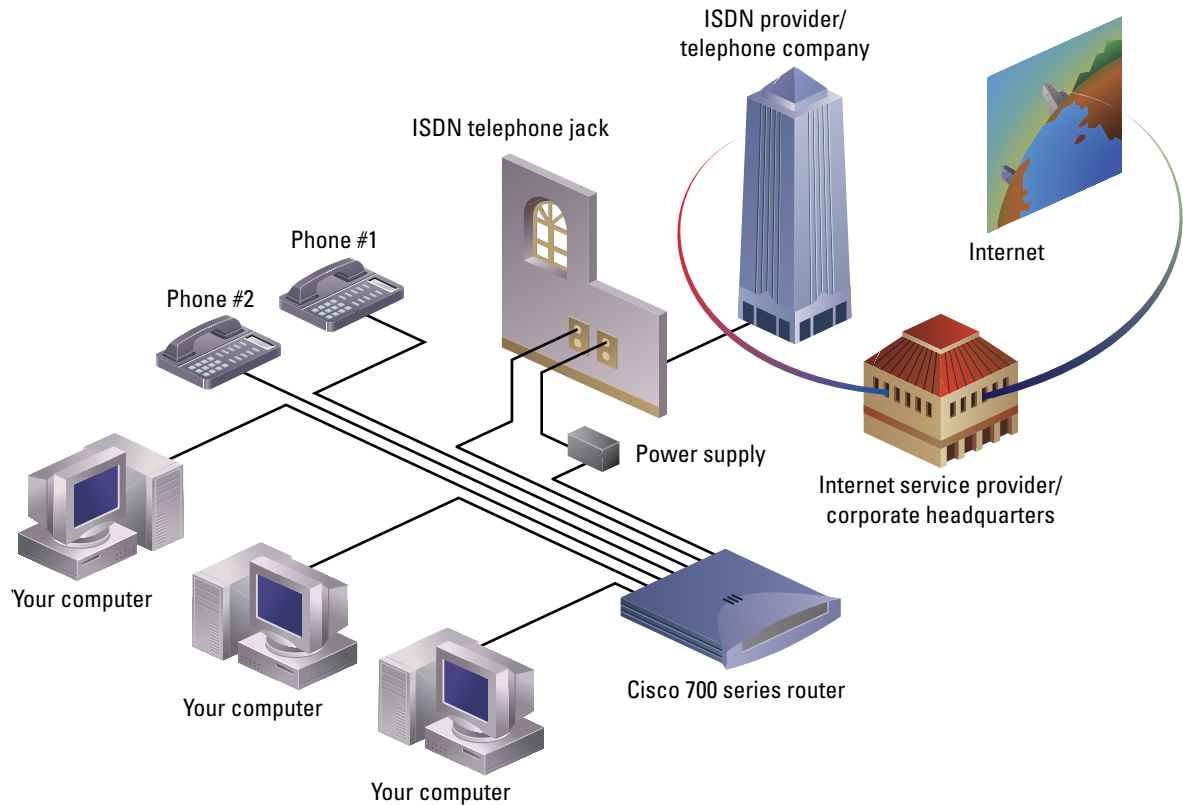


Quick Start Guide

CISCO 770 SERIES CABLING AND SETUP



1

Unpack the Router

2

Connect Cables to the Router

3

Set Up the Router

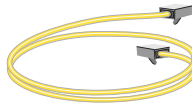
1 Unpack the Router

Remove the router from the package and locate the clear plastic bag labeled “Open Me First.” The bag contains all the required cables for your router. Also remove the black power supply from the accessory kit.

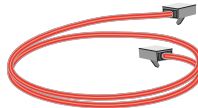
1 Cisco 770 series router



1 yellow Ethernet cable

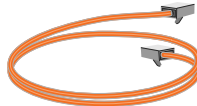


1 red ISDN U cable



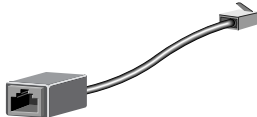
Cisco 772 and Cisco 776 routers only.

1 orange ISDN S/T cable

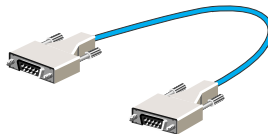


Cisco 771 and Cisco 775 routers only.

1 RJ-45-to-RJ-11 adapter



1 blue config cable (optional)



1 black power supply



1 black power supply cord

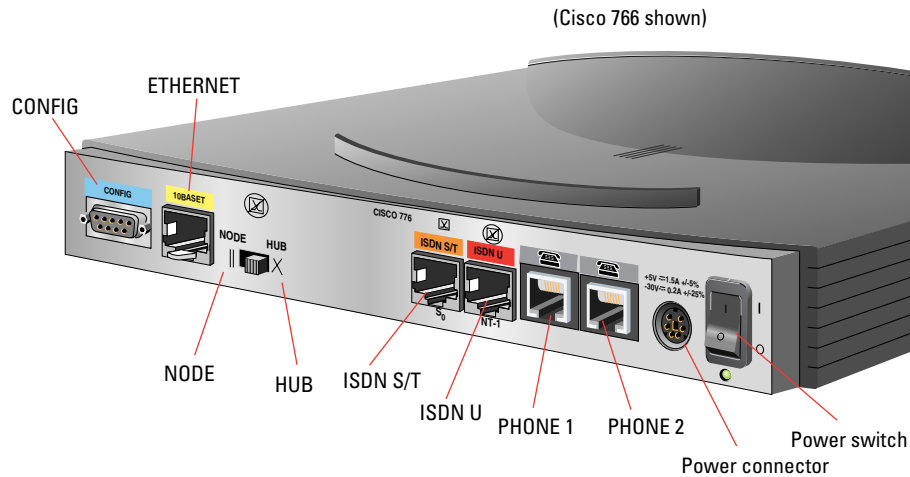


1 Cisco Fast Step CD-ROM



Located on page 11 of this guide.

2 Connect Cables to the Router



The ports on the router and the cables are color coded to assist you in making the proper connections. Position the router so that the rear panel is facing you.

The following pages contain detailed instructions on connecting cables to your router.

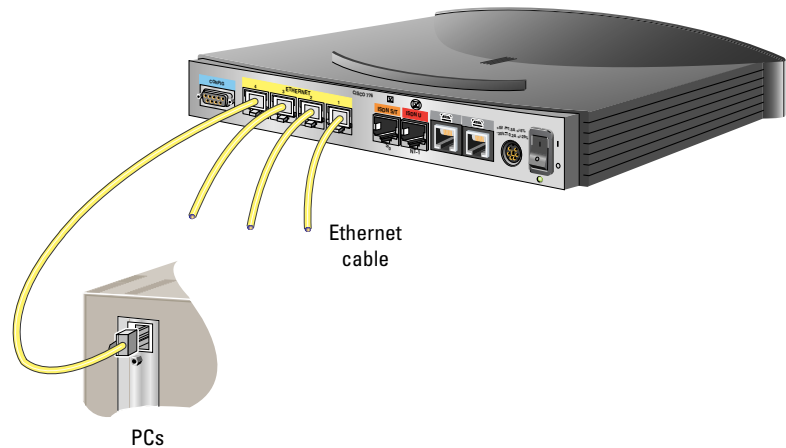
2 Connect the Ethernet Cable to a Computer or Hub

Option 1: To connect the Ethernet cable to a computer, go to option 1 below.

Option 2: To connect the Ethernet cable to a hub, go to option 2 below.

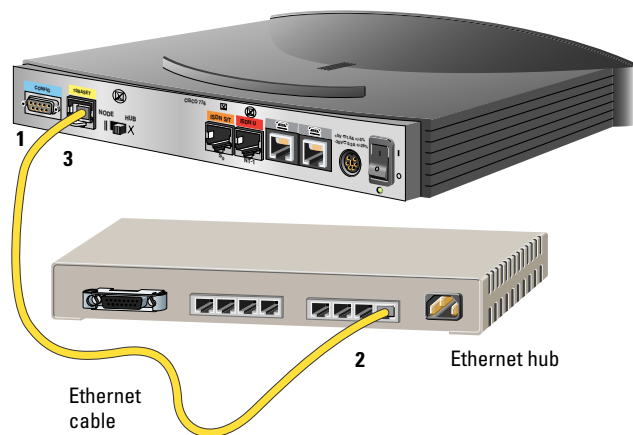
Option 1 Connect the Ethernet Cable to a Computer

- 1 Connect the **yellow** Ethernet cable to any of the **yellow** ports labeled ETHERNET on the rear panel of your router.
- 2 Connect the other end of the cable to the Ethernet connector on the back of your computer.



Option 2 Connect the Ethernet Cable to a Hub

- 1 Connect an Ethernet crossover cable (not included) to any of the **yellow** ports labeled ETHERNET on the rear panel of your router.
- 2 Connect the other end of the cable to an available port on your Ethernet hub.



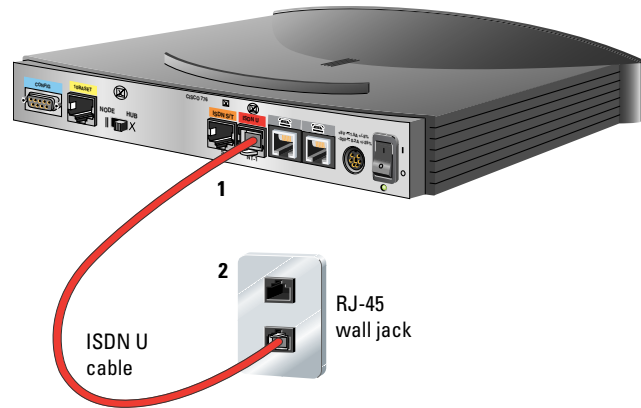
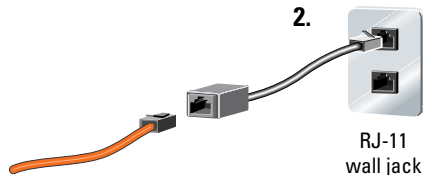
2 Connect the ISDN Line

Check the rear panel of your router to find out which model you have.

Option 1: If you have a Cisco 772 or 776, go to option 1 below.

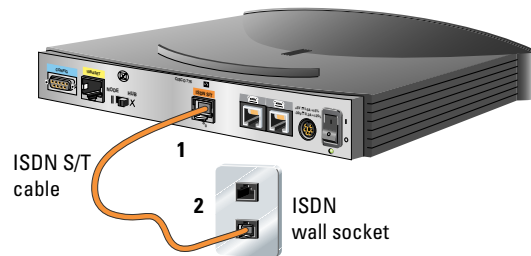
Option 2: If you have a Cisco 771 or 775, go to option 2 below.

- 1 Connect the red ISDN U cable to the red port labeled ISDN U on the rear panel of your router.
- 2 Connect the other end of the ISDN U cable directly to an RJ-45 ISDN wall jack. If necessary, use the enclosed RJ-45-to-RJ-11 adapter to connect to an RJ-11 ISDN wall jack.



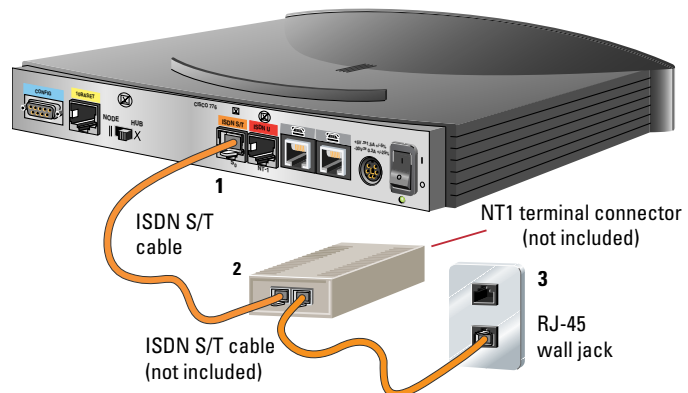
Outside North America

- 1 Connect the orange ISDN S/T cable to the orange port labeled ISDN S/T on the rear panel of your router.
- 2 Connect the other end of the ISDN S/T cable to the ISDN wall socket.



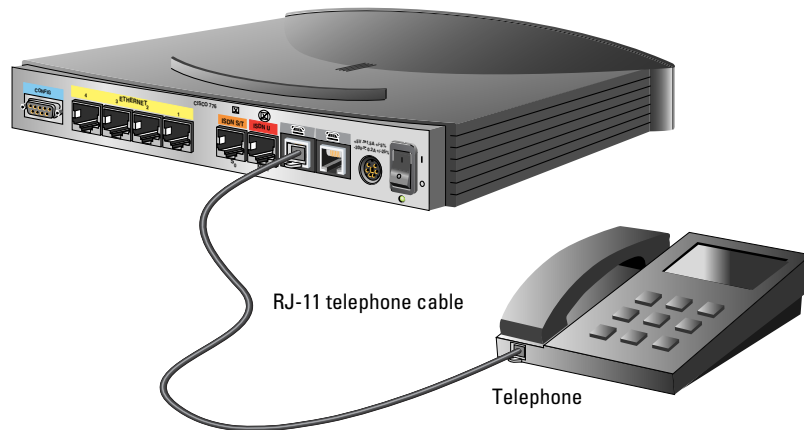
North America Only

- 1 Connect the orange ISDN S/T cable to the orange port on the router labeled ISDN S/T.
- 2 Connect the other end of the orange ISDN S/T cable to the NT1 terminal connector.
- 3 Connect the NT1 terminal connector to the ISDN wall jack using the ISDN S/T cable that came with your NT1 terminal connector.



2

Connect Optional Telephones and Facsimile Machines

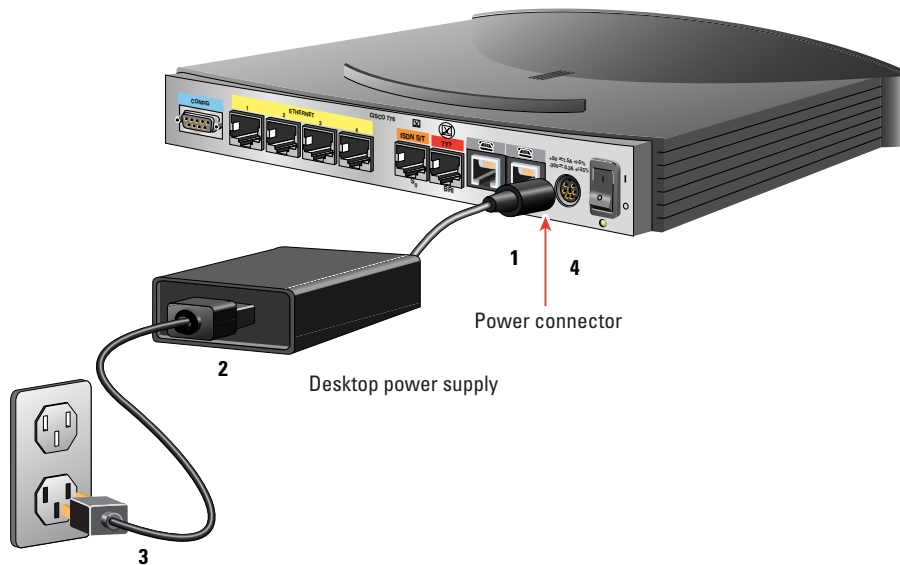


If you are using a Cisco 775 or Cisco 776, you can connect telephones and facsimile machines directly to the router.

Connect the telephone cable (provided with your telephone or fax machine) to the gray port labeled PHONE 1 or PHONE 2 on the rear panel of your router.

If you are connecting only one device, connect it to the port labeled PHONE 1.

2 Connect Power and Turn On the Router



- 1 Connect the round end of the power supply cable to the black circular power connector on the rear panel of your router.
- 2 Connect the black power supply cord to the black power supply.
- 3 Connect the power supply cord to an electrical outlet.
- 4 Turn on the router by using the on/off switch on the rear panel.

The green RDY LED (and the NT1 LED on the Cisco 772 and Cisco 776) on the front panel of your router goes on. Your router is now ready to be set up.

If the green RDY LED is not on, refer to the “Troubleshooting Cisco 700 Series Routers” chapter in the *Cisco 700 Series Installation Guide*, inside the plastic bag labeled “Open Me Only If Needed.”

3 Set Up the Router

If you are configuring your router using **Microsoft Windows 95** or **Windows NT version 4** operating systems, insert the CD-ROM located in the back of this guide into the CD-ROM drive of your computer. The **Fast Step** setup program should start automatically.

If the setup program does not start automatically, follow these instructions:

- 1 Double-click the **My Computer** icon.
- 2 Double-click the **CD** icon.
- 3 Double-click the **Setup.exe** icon.

Follow the on-screen instructions to guide you through setting up and testing of the router.

For your convenience, information on ordering your ISDN line is provided on page 9. A form prompting you for setup information is on page 10.

Order the ISDN Line

Step 1 Contact your ISDN service provider (usually the telephone company).

Step 2 Order a single 128-kbps ISDN BRI line (which is equivalent to two telephone lines).

If applicable, request the additional call offering option that allows telephone conversations while the router is in use.

Order other features you want—for example, call conferencing, call waiting, or call transferring.

Step 3 Obtain and record the following information from your ISDN service provider:

1 Switch type (check one):

- NI-1 National ISDN-1
- 5ESS AT&T 5ESS
- DMS Nortel DMS-100
- INS Japan - NTT Information Network System
- VN3 France - ISDN BRI Standard
- NET3 Europe - ISDN BRI Standard
- 1TR6 Germany - ISDN Standard
- TPH Australia

2 SPIDs (optional):

- a. SPID1 _____
- b. SPID2 _____

3 ISDN telephone numbers (optional):

- a. ISDN telephone number 1

- b. ISDN telephone number 2

Gather Connection Information

Option 1: To connect directly to an Internet service provider, go to option 1 below.

Option 2: To connect directly to your remote corporate network, go to option 2 below.

Option 1 Internet Service Provider

Step 1 Contact your Internet service provider.

Step 2 Order Internet service for a single 128-kbps ISDN BRI line.

Step 3 Obtain and record the following information from your Internet service provider. Some of this information might not be required.

4 Internet service provider telephone number

5 Internet service provider second telephone number (optional)

6 Your router user name

7 Your router Internet service provider-supplied password

8 Primary DNS _____

9 Secondary DNS _____

10 WAN IP address _____

11 WAN subnet mask _____

Option 2 Remote Corporate Network

Step 1 Contact your network administrator.

Step 2 Obtain and record the following information from your network administrator. Some of this information might not be required.

3 Remote corporate network telephone number

4 Remote corporate network second telephone number (optional)

5 Your router user name

6 Your remote corporate network password

To use Internet applications like Web browsers or e-mail, or to connect to Microsoft Windows NT servers using TCP/IP, obtain the following information:

7 Primary DNS _____

8 Secondary DNS _____

9 WAN IP address _____

10 WAN subnet mask _____

11 Primary WINS (optional) _____

12 Secondary WINS (optional) _____

To connect to files and printers on NetWare, Windows NT, or Windows 95 systems using the Novell protocol, obtain the following information:

13 IPX LAN network number _____

14 IPX frame type (check one):

Ethernet_II 802.3 802.2 SNAP

15 IPX WAN network number _____

**Corporate Headquarters**

Cisco Systems, Inc.
170 West Tasman Drive
San Jose, CA 95134-1706
USA
<http://www.cisco.com>
Tel: 408 526-4000
800 553-NETS (6387)
Fax: 408 526-4100

European Headquarters

Cisco Systems Europe s.a.r.l.
Parc Evolic, Batiment L1/L2
16, Avenue du Quebec
Villebon, BP 706
91961 Courtaboeuf Cedex
France
<http://www-europe.cisco.com>
Tel: 33 1 6918 61 00
Fax: 33 1 6928 83 26

Americas

Headquarters
Cisco Systems, Inc.
170 West Tasman Drive
San Jose, CA 95134-1706
USA
<http://www.cisco.com>
Tel: 408 526-7660
Fax: 408 527-0883

Asia Headquarters

Nihon Cisco Systems K.K.
Fuji Building, 9th floor
3-2-3 Marunouchi
Chiyoda-ku, Tokyo 100
Japan
<http://www.cisco.com>
Tel: 81 3 5219 6250
Fax: 81 3 5219 6001

Cisco Systems has more than 190 offices in the following countries. Addresses, phone numbers, and fax numbers are listed on the **Cisco Connection Online Web site at <http://www.cisco.com>.**

Argentina • Australia • Austria • Belgium • Brazil • Canada • Chile • China (PRC) • Colombia • Costa Rica • Czech Republic • Denmark
Finland • France • Germany • Hong Kong • Hungary • India • Indonesia • Ireland • Israel • Italy • Japan • Korea • Malaysia • Mexico
The Netherlands • New Zealand • Norway • Philippines • Poland • Portugal • Russia • Singapore • South Africa • Spain • Sweden
Switzerland • Taiwan, ROC • Thailand • United Arab Emirates • United Kingdom • Venezuela

Copyright © 1997 Cisco Systems, Inc. All rights reserved. AccessPath, AtmDirector, Cache Director System, CD-PAC, Cisco IOS, the Cisco IOS logo, *CiscoLink*, the Cisco Powered Network logo, ClickStart, ControlStream, Fast Step, FragmentFree, IGX, JumpStart, LAN²LAN Enterprise, LAN²LAN Remote Office, MICA, NetBeyond, NetFlow, Netsys Technologies, *Packet*, PIX, Point and Click Internetworking, RouteStream, SMARTnet, StrataSphere, StrataSphere BILLder, StrataSphere Connection Manager, StrataSphere Modeler, StrataSphere Optimizer, Stratum, StreamView, SwitchProbe, *The Cell*, TokenSwitch, TrafficDirector, VirtualStream, VlanDirector, Workgroup Director, Workgroup Stack, and XCI are trademarks; The Network Works. No Excuses. is a service mark; and BPX, Catalyst, Cisco, Cisco Systems, the Cisco Systems logo, EtherChannel, FastHub, FastPacket, ForeSight, IPX, LightStream, OptiClass, Phase/IP, StrataCom, and StrataView Plus are registered trademarks of Cisco Systems, Inc. in the U.S. and certain other countries. All other trademarks mentioned in this document are the property of their respective owners. 978R